



CONSEJO DE
CAMBIO CLIMÁTICO

PUERTO RICO

Robert Mayer

Universidad de Puerto Rico, Aguadilla

Ecological Restoration of Sand Dunes and Mangroves in Puerto Rico : Increasing Coastal Resilience



UPR
Universidad de Puerto Rico

Robert J. Mayer Ph.D., CERP

Universidad de Puerto Rico en Aguadilla

Vida Marina: Center for Conservation and Ecological Restoration

robert.mayer@upr.edu

(787) 890-2681 x 2295



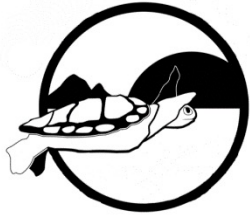




Middles beach, Isabela
After winter storm Riley – March 2018







Vida Marina is the Center of Conservation and Ecological Restoration of the University of Puerto Rico



Operated by undergraduate research students and 8 full time employees that do multiple tasks related to our ecological restoration projects.









Marbela Casa de Playa, Isabela





Barrio Bajuras, Isabela



Sand accretion, as a result of Hurricane Fiona, on biomimicry matrices on the north-western coast of Puerto Rico.

Robert J. Mayer Ph.D., CERP; Bárbara K. Antunes Borges Ph.D.
Vida Marina: Center for Conservation and Ecological Restoration
University of Puerto Rico at Aguadilla



Figure 1. Biomimicry matrix on a breach on the primary dune in Secret Spot Beach, Isabela. The image on the left was taken on February 25, 2021 and the one on the right was taken on September 28, 2022. Note the large volume of sand accumulated on the mimicry. This was caused by the storm surge caused by hurricane Fiona on September 18, 2022.

Biomimicry matrices are built using boards from dismantled wooden shipping pallets driven on holes made using a gas-operated auger. The boards are installed in areas where there is significant wind-transport of sand.



Finca Nolla Protected Area, Camuy.

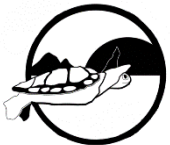
2013



SUFFOLK
UNIVERSITY
BOSTON



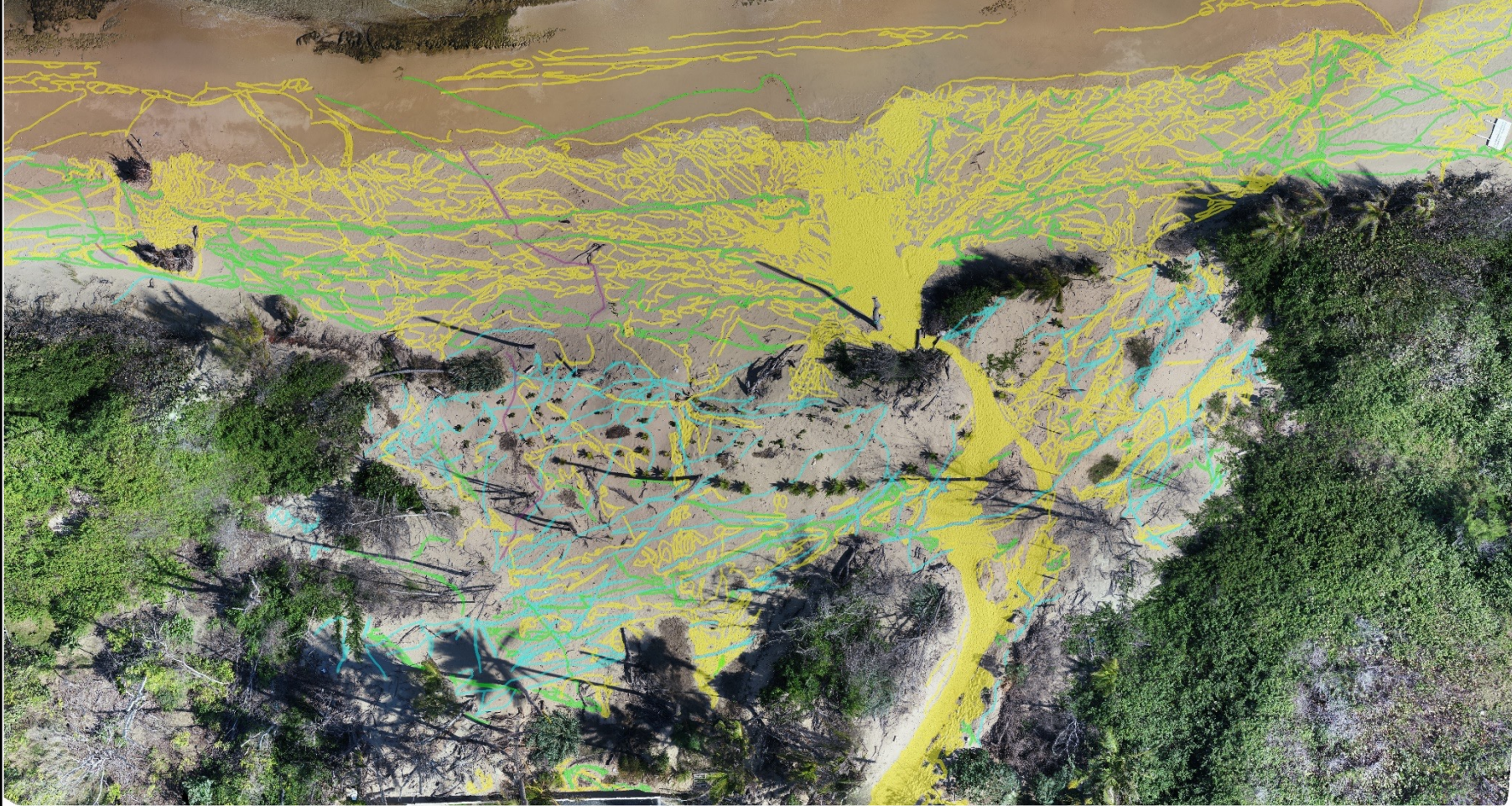
We are spreading the word about the importance of dune restoration with our environmental education component.



Arboretum
UNIVERSITY OF WISCONSIN-MADISON



Mid Project
March 15, 2019



Human tracks **Dog tracks** **Iguana tracks** **Bike tracks** **Horse tracks** **Bird tracks**

Post extreme weather event
February 27, 2020



Date of installation = July 2019

September 19, 2020



7 months later



















CONSEJO DE
CAMBIO CLIMÁTICO

PUERTO RICO